

The Badwell Broadsheet

Issue 104 - April / May 2025



A note from the Chair of the Parish Council.

Richard Morris - Chairman

The gentle thaw of winter has given way to the vibrant hues of spring, and our villages are once again alive with the promise of new beginnings.

I'm really excited to bring you the latest news and updates in our first 12-page edition of the Broadsheet! A huge thank you to everyone who has contributed.

First and foremost, a sincere and heartfelt thank you is extended to Pete Dixon. Pete's unwavering dedication as our interim Clerk has been truly invaluable. During a period of transition, his calm demeanour, meticulous attention to detail, and tireless commitment ensured the seamless continuity of village operations.

With the changing of the seasons, we

also welcome Tavid Dobson as our new village Clerk, from 1st April. Tavid brings a fresh perspective to the role, and we are confident that his enthusiasm and dedication will be a tremendous asset to our villages. We look forward to working alongside him.

Thank to all the applicants for their interest in the role.

Adding to the spring excitement, the village hall has undergone a remarkable transformation. The recent external refurbishment has breathed new life into this cherished community hub, creating a modern, welcoming, and versatile space for all to enjoy. We encourage everyone to come and explore the revitalised village hall, participate in the upcoming events, and make the most of this invaluable community asset.

This spring, let us embrace the spirit of renewal, celebrate the contributions of those who serve our community, and look forward to the exciting opportunities that lie ahead.

Together, we can continue to build a vibrant and thriving village for generations to come.

Richard

Check out the
issue online



The Parish Council has made every effort to ensure the accuracy of the information within this newsletter was correct at time of publication. The Parish Council does not assume, and hereby disclaims, any liability to any party for any loss, damage caused by errors or omissions. The views within the newsletter are not necessarily those held by the Parish Council.

The Badwell Ash History Society

Karl Hортt – info@badwellashheritage.co.uk

The History of Badwell Ash: Farming and Land Use, Occupations, and Population

When we bought our house in the village in 2003, the previous owners gave us a folder containing documents about the history of the house and surrounding buildings.

Recently, I revisited these documents and came across a folder from Suffolk County Council titled "SUFFOLK PARISH PACK, Libraries and Heritage." This pack contains 18 A4 pages of historical documents, maps, and extracts from White's County Directory for Suffolk (1844, 1874, and 1900), Pocket Histories of Suffolk Parishes (c.1930), and A Survey of Suffolk Parish History (Domesday to 1986).

This article will focus on three key aspects: **Farming and Land Use, Occupations and Village Population.**

The Meaning of Badwell Ash

Badwell Ash originates from Bada's stream near the field with ash trees. In the past, the village was also known as Little Ashfield.

Farming and Land Use

The parish of Badwell Ash covers 1,860 acres.

In 1283, farmland was used for 247 quarters of crops (A quarter was a unit of land, generally equivalent to a quarter of a hide. A hide could range from 60 to 120 acres, therefore, a quarter would be approximately 15 to 30 acres.) 25 horses, 149 cattle, 78 pigs, 192 sheep

Between 1500 and 1640, the land was primarily used for pasture and meadow,

with a focus on cattle rearing and dairying. Some pig-keeping, sheep farming, horse breeding, and poultry farming were also present.

Crops grown included: Main crops: Barley, wheat, rye, and oats. Additional crops: Peas, legumes, hops, and occasionally hemp

Occupations in Badwell Ash

The recorded occupations in the village between 1500 and 1699 were as follows:

1500–1549 1 Yeoman, 1 Husbandman, 1 Butcher, 1 Fuller

1550–1599 9 Yeomen, 3 Husbandmen, 1 Labourer, 1 Weaver, 1 Tailor, 1 Glover, 1 Spinster, 1 Cord Maker

1600–1649 6 Yeomen, 4 Husbandmen, 1 Tanner, 1 Miller, 1 Butcher, 1 Tailor, 1 Blacksmith, 1 Spinster

1650–1699 4 Yeomen, 1 Husbandman, 1 Clothier, 1 Linen Weaver, 1 Wheelwright, 1 Glazier, 1 Cooper, 1 Blacksmith

Explanation of Occupations

Yeoman: A landowner.

Husbandman: A smallholder or tenant farmer.

Fuller: A worker involved in the cleaning and processing of wool to remove impurities.

Spinster: A woman who spun wool for a living.

Cooper: A maker of wooden barrels

Tanner: A worker who processed animal hides into leather.

Clothier: A merchant who supplied tailors and weavers with clothing materials.

Glazier: A craftsman skilled in fitting

and designing glass windows, mainly stained glass.

Village Population Over Time

1327: 29 taxpayers
(At this time, taxpayers in England were those who owned or possessed movable goods worth at least 10 shillings. This included landlords, tenants, traders, and craftsmen.) With an average of 3.5 people per household, the estimated population was around 100.

1603: 126 adults recorded

1662: 33 householders.
(Householders owned or rented a house and were responsible for its upkeep.)

With an average of 4.75 people per household, the estimated population was around 156. 11 poor people were recorded as receiving relief.

1674: 42 householders. With an average of 4.75 people per household, the estimated population was approximately 200.

1676: 105 adults recorded

1801: 348 inhabitants recorded

Conclusion

The history of Badwell Ash reflects the development of an English rural village over centuries, from its early use of farmland and livestock rearing to the evolution of occupations and population growth. These records provide a fascinating insight into the lives of those who lived and worked in the village throughout history.

Suffolk and area foodbank

Please contact Caroline Morris: 07843 248411

The Suffolk and area foodbank are looking for donations of the following items. If you are able to help, please contact Caroline Morris - 0783248411

- Breakfast cereals
- Biscuits/snack bars
- Granulated sugar
- Milk (long life)
- Fruit juice (long life)
- Meat and fish(tinned)

- Vegetables (tinned)
- Tinned rice pudding
- Tinned tomatoes
- Dried rice 500g
- Jam, marmalade, peanut butter
- Tea bags, coffee, hot chocolate
- Instant mash,
- Squash
- Children's snacks

- Custard/ tinned puddings
- Toiletries
- Toilet rolls (4 pack)

Stowmarket Foodbank

Supporting individuals and families in crisis

From the Parish Council

Visit the villages' website: badwellash.suffolk.cloud

The Parish Clerk

Since the end of January, the Parish Council has been without a permanent Clerk. That might not sound much but actually it has been a real problem.

The Clerk has rightly been described as the Chief Executive of the Parish. It's they who drive the business of the Parish Council. Not only the usual paperwork of agendas, minutes and letters and keeping tabs on the money but, much more importantly, also sorting out with the Chair what should be discussed and how.

Their role is to help Councillors to sort out not only the tricky immediate issues but also to help them identify the important long term issues facing the Parish and, together, sorting out how best to tackle them.

Alongside the challenges of a growing population; of new housing popping up; of resultant increases in traffic, and not least, of residents' expectations - there are benefits. The Council gets a cash levy from developers for every square foot of new housing they put up in the Parish. We, in turn, are entitled to 15% of that money (hopefully going up to 25% if we all approve our Neighbourhood Plan in a few month's time). We also get a chance to bid into the Council's pot as well.

That could equate to quite a lot of money. So the big challenge will be making sure we spend it wisely, with an eye to what the needs of the whole Parish might be in twenty years' time - and not just tomorrow.

Easier said than done.

We were very lucky to have had Carole Rose as our Clerk for a number of years. We were truly grateful for her unstinting service but, since her departure, we have had to manage with a combination of Councillors and lay people holding the fort, none qualified and none paid!

However, we are now pleased to confirm that Tavid Dobson who lives in Badwell Ash will take on the role of Parish Clerk with effect from 1st April. He will be assisted by Lainey Pace as Minute Secretary and Parish Councillor Clare Taylor who will continue as Responsible Financial Officer (that's Treasurer to you and me) for the time being.

A big thank you' to all of them for taking on an important job and we wish them well.

Long Thurlow Book Exchange



Long Thurlow is looking to trial using its brick bus shelter as a book exchange. A set of shelves has been installed inside the shelter, and some books have been donated to get us going.

A regular mobile library service operates in the Parish, which we don't want to undermine. Still, we see the book exchange as an additional resource for residents.

Other villages operate a mobile library and book exchange together, and there are no issues, but again, we would need to evaluate this during the trial period.

Please note that this is a book exchange, and people can add, remove, or exchange books at any time. To keep books clean and dry, please put them on the shelves, not on the floor or bench.

The book exchange will be monitored and maintained regularly and is now open for you to peruse.

The Parish acknowledges and thanks Lainey Pace for her initiative in suggesting and completing this project.

New benches

The Parish Council is asking residents to submit suggestions for the possible locations of two new benches within the Parish.

These are being funded through a 'Pride in Your Place' Grant application to the Mid Suffolk District Council.

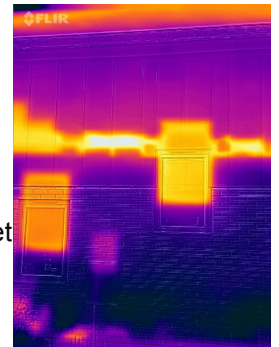
Please send your suggestions for proposed locations for the benches and why they should be placed there to the Parish Clerk -

badwellashpc@outlook.com
combadwellashpc@outlook.com

Residents Thermal Imaging Surveys

We hope that all the residents who requested and participated in the free Thermal Imaging Survey of their house by the trained volunteers from the parish have found it useful.

Hopefully, those of you who took part and want to improve your home's energy efficiency will be able to use the information gathered to target the areas of the house that may need addressing and possibly take advantage of Mid Suffolk District Council's cost-saving initiatives on insulation.



Dog mess on the playing field

No one likes dog poo. But as dog owners, it's a fact of life. If you have a canine companion, you have to clear up after it.

There sadly has been an increase in the amount of dog poo left on the playing field. This land is there for the whole village to enjoy. Sadly, if this continues, the few will ruin it for the many and dogs will be banned from the field.

Please clear up after your dog.

Antisocial behaviour

There have been reports of anti-social behaviour in the village - food being thrown at doors. If you're affected by this, please report to the police on 101.

Village Hall update

Clive Hawkins - Chairman of Trustees



How time flies. Since the last issue of The Broadsheet, the external cladding of the village hall walls has been completed, and what an improvement, as can be seen.

Our thanks to all those who have expressed their approval of the transformation.

The planters at the front of the hall await their final touches. In addition to their aesthetic appearance, they also serve as vehicle barriers to protect the property.

The next phase of the improvements is

due to commence at the end of March. This will be the installation of a new canopy at the back of the halls, followed in April by the laying of the new courtyard surface. All of this work has been financed by external funders, to whom we're obviously grateful and give our thanks. To date, improvements made have already contributed to increased bookings, and long may it last.

The installation of CCTV is another step towards protecting the property and all of its users. This follows earlier incidents of vandalism and damage to the halls. Details related to this new facility can be found on the Village Hall Website.

Our last Coffee Morning, which was enjoyed by all who attended, helped to support the hall funds. Thanks to all who came.

Unfortunately, the Table Top Sale has had to be cancelled, but look out for a future one. The next event is the Quiz Night with a variation, so look out for the advertising and book early to avoid disappointment.

Unfortunately, we have lost some of our committee members, and we thank them for their past service. In the meantime, we have gained new members and look forward to their input as we move forward.

The Trustees continue to work to improve the village hall and raise funds. Please contact us if you have genuine ideas that may contribute to these goals. After all, the Village Hall is for the community at large.

Before...



After...



Great Ashfield & Badwell Ash WI

Midge Hawkins - 01359 259399

Spring arrived with glorious sunshine. How lucky we have been. The gardens look beautiful with all the colours of the spring bulbs and the flowering trees.

Unfortunately, our February member's meeting had to be cancelled due to unforeseen circumstances.

For our March meeting, we had Barry Bloomfield and Bruce from The Suffolk Punch Trust. The Suffolk Punch horse has been a part of the Suffolk landscape since the early 16th century. The Trust is an educational and environmental charity dedicated to breeding and preserving the critically endangered oldest breed of working horse. A very interesting talk from two very dedicated members.

We also had a craft competition with a Spring/Easter theme. We had joint winners - Carole, who made an Easter Tea Party with knitted animals and decorated cupcakes, and Valerie, who created a beautiful arrangement of spring flowers along with crochet spring animals. All the entries were charming.



Our next three meetings – all listed below - are to be held in the Lord Thurlow Hall at Great Ashfield at 7.30pm unless otherwise stated. Our meetings are held on the second Thursday of each month. Afternoon meetings are held in the months of – December, January and February each year and are 2.30 to 4.30pm.

10th April 2025 - This is an open meeting at 7.30pm in the Lord Thurlow Hall. Our speaker, Lucy Lewis, will be talking about "lighting the fuse." She'll reveal the hidden world of bomb disposal training and how she became the first female bomb disposal expert. Come and find out more about this exacting job. Ladies and gents, you're welcome to join us for the evening. Non-members £3, which includes refreshments and a raffle ticket.

8th May 2025 – An evening meeting at 7.30pm. It is our Annual General Meeting, during which we give reports on the previous year and we vote for our President and committee. We shall also have a crafting session and a 'bring & buy' table.

12th June 2025 – An evening meeting at 7.30pm. Our Speaker is from My WiSH - West Suffolk NHS Foundation Trust. Their mission is to enhance the wonderful care you, your family, friends and loved ones receive at the Trust. The charity was entered on the Central Register of Charities on the 15th September 1995. It constituted 91 individual funds and was managed ad-hoc by the Trust's finance department. In May 2016, the decision was made to rebrand the charity, launching under the new name 'My WiSH Charity'. This decision has seen the charity go from strength to strength. Learn more about the current appeals, how to get involved, and what contributions their fundraising has made.

We would welcome any new members to join us. We are not a huge group but a very friendly one, and we invite you to come and see what we are all about. All new visitors have one free meeting and then pay £3 for each of the next two meetings before deciding whether or not to join. This includes a raffle ticket and refreshments. Please feel free to ring me for any further information on 01359 259399.

The Neighbourhood Plan

badwellashplan@gmail.com



The Neighbourhood Plan moves on.

If you thought that everything about the Neighbourhood Plan (NP) had been a bit quiet lately - you would have been right. All the public consultation is over, all the words have been written, the working party is quietly minding its own business.....so what more needs doing?

Quite a lot actually - but not by us.

The finished document has been packed off to Mid Suffolk District Council for them to have a final look. They then have to conduct yet another public consultation over a six week period. In our case that runs from 10th March to 25th April.

After that the NP plan, together with any final comments from their consultation, is despatched to an external examiner.

These are important people. They are independent of both the Parish and of the District Council and their job is, in effect, to make sure that our NP does what it is meant to do. As part of that, the examiner checks to see that, amongst other things, our NP doesn't conflict with national policies or with wider local planning strategies; that it

contributes to sustainable development; and that it doesn't breach EU obligations.

This all takes time.....However we are optimistic that the whole process could be over by the early summer, The District Council would then organise a Parish-wide referendum and if there was a simple majority of votes counted, we would be past the post and would have our own Neighbourhood Plan.

Then the work really starts!

Our Bus Service

Richard Winch, District Councillor - richard.winch@midsuffolk.co.uk

New timetable for Simonds 73 Service

The new timetable for Simonds 73 Service came into force on Monday Feb 24th.

For details of the timetable please see below.

This is the result of a campaign called "Save Our Buses" which represents a number of villages in West Suffolk and Mid Suffolk.

The bus service is being funded by Suffolk County Council for a year, and we are expecting further funding for an additional year via government funding.

It's really important that we all try and use the bus service if we want to keep this going.

Monday to Fridays only?

The bus service is only running on weekdays.

We are currently trying to lobby the County Council to provide a Saturday service. We won't know about this for a couple of months, but early signs are hopeful.

Summary of where we are with our bus service

The bad news is that:

- this is a reduced service versus what we had a year ago

- there is no publicly funded option for students travelling to Thurston

The good news is that the expectation is that this new timetable will be viable, and we shouldn't be in crisis mode

again in 12 months' time. We were very close to losing our bus service completely.

Bus fare

The fare is £3 as per the National Bus Fare cap.

Bus Passes

Don't forget if you have reached pension age you qualify for a bus pass which will give you free travel on the bus after 09:30 in the morning.

Transport Made Simple

73 SUMMARY TIMETABLE

Diss > Barningham > Bardwell > Stanton > Bury St Edmunds

MONDAY TO FRIDAY | Except Bank Holidays

Buses towards Bury St Edmunds	73	73	Buses towards Garboldisham	73	73	73
Diss, Bus Station	06:50	-	Bury St Edmunds, St Benedicts Catholic School	13:30	16:00	18:15
Garboldisham, Fox Inn	07:00	09:30	Bury St Edmunds, West Suffolk College	13:35	16:15	18:20
Hopton, Church Bus Shelter	07:05	09:35	Bury St Edmunds Bus Station (Stand 5)	13:39	16:25	18:24
Market Weston, Village Hall	07:08	09:38	Great Barton, Bunbury Avenue	13:43	16:28	18:28
Coney Weston, The Swan	07:15	09:45	Great Barton, A143 Bus Shelter	13:45	16:30	18:30
Barningham, Royal George	07:19	09:49	Pakenham, Fox PH	13:51	16:36	18:36
Bardwell, Post Office (Tithe Barn)	07:26	09:56	Stowlangtoft, Church	13:55	16:40	18:40
Stanton, Hilltop Way	07:29	09:59	Hunston, Dairy Farm	13:57	16:42	18:42
Stanton, Memorial	07:33	10:03	Badwell Ash, Village Hall	14:00	16:45	18:45
Shepherd's Grove, Cafe	07:34	10:04	Walsham Le Willows Church / Four Ashes	14:06	16:51	18:51
Walsham Le Willows Church / Four Ashes	07:40	10:10	Shepherd's Grove, Cafe	14:14	16:59	18:59
Badwell Ash, Village Hall	07:45	10:15	Stanton, Memorial	14:15	17:00	19:00
Hunston, Dairy Farm	07:48	10:18	Stanton, Hilltop Way	14:19	17:04	19:04
Stowlangtoft, Church	07:50	10:20	Bardwell, Post Office (Tithe Barn)	14:23	17:08	19:08
Pakenham, Fox PH	07:55	10:25	Barningham, Royal George	14:30	17:15	19:15
Great Barton, A143 Bus Shelter	08:01	10:31	Coney Weston, The Swan	14:33	17:18	19:18
Great Barton, Bunbury Avenue	08:03	10:33	Market Weston, Village Hall	14:39	17:24	19:24
Bury St Edmunds Bus Station (Stand 5)	08:25	10:47	Hopton, Church Bus Shelter	14:42	17:27	19:27
Bury St Edmunds, West Suffolk College	08:33	10:50	Garboldisham, Fox Inn	14:47	17:32	19:32
Bury St Edmunds, St Benedicts Catholic School	08:40	11:05	Diss, Bus Station	-	-	19:42

Badwell Ash and Langham Spring Walk

This walk is approximately 2.4 miles (3.6km) and will take about an hour, depending on your pace.

The starting point is at the shop - this seems an excellent place to start. Set off walking towards the church. Think safety first, and stay on the pavement where possible - carefully crossing the road.

Walk past the church and almost opposite the chip shop, before the village sign, there is a path that goes down between the houses. Head down the slight incline towards the sheep field and walk on the footpath around the edge of the enclosure. If you're lucky, there may be lambs.

You'll come to a gate in to the next field. Go through, not forgetting to close it after you, and head in a straight line to the opposite side of the field. Again, go through the gate, closing it after you.

Turn left (right is not a public right of way) along the waterway until you come to the wooden bridge.

Cross over that and carry on up the hill with the hedge on your right.

Follow the path round to the left, following the edge of the field, past the horses. The footpath is clearly marked through the Langham Estate.

You'll pass the gate for the church and the walled garden on your left. Enjoy looking at the horses that are around, but please don't feed them. There may be some foals around, too.

When you get to the yard, follow the footpath signs to the left, through the gates and onto the road.

At the road, turn right. When walking on a road without a pavement, remember the Highway Code and face oncoming traffic.

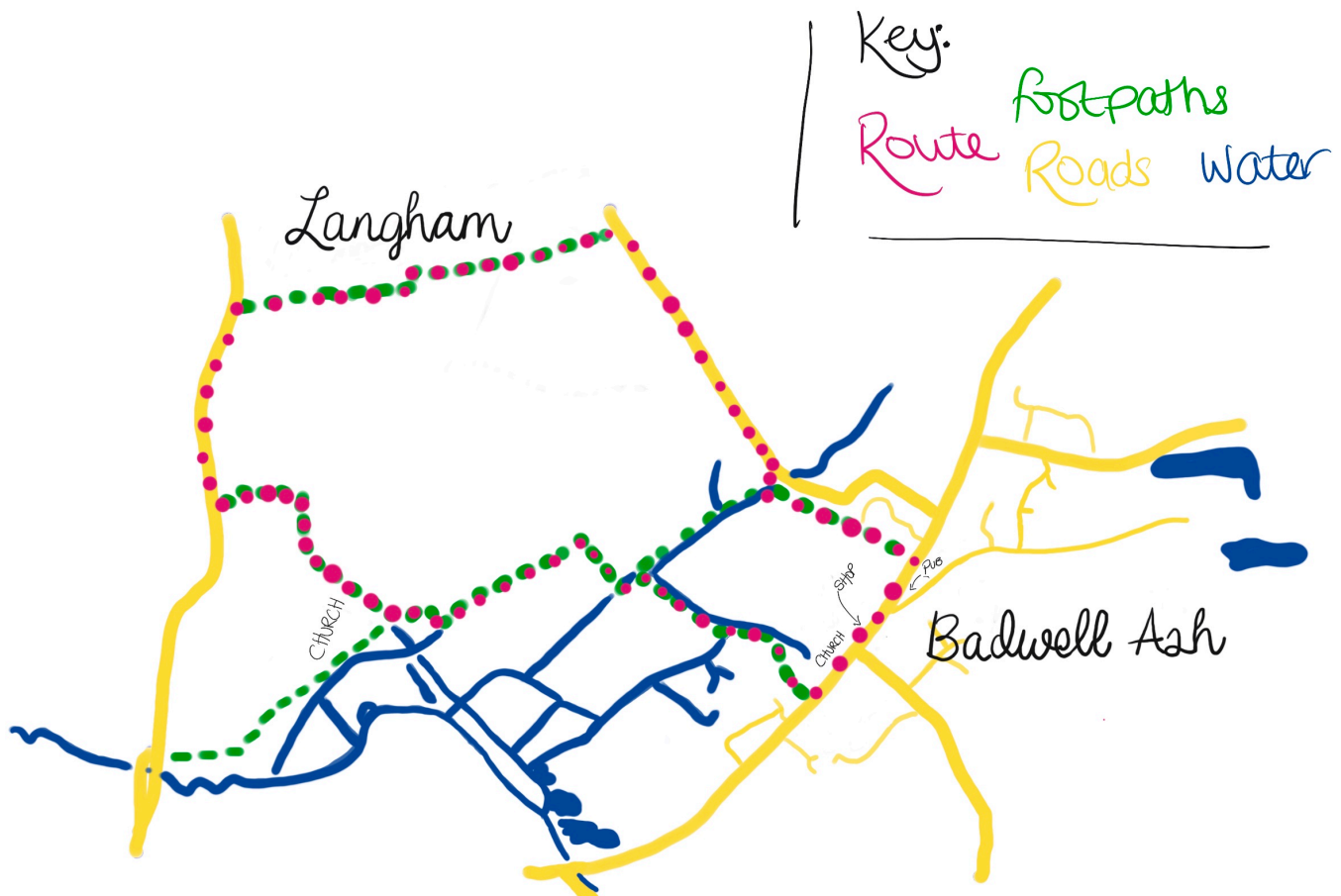
Walking on the road between the trees, you'll pass the entrance to the stud before coming to a triangle of two driveways on your left. Take the second entrance—the one next to the footpath—and walk down between the houses.

There are stunning daffodils along the side of the path.

Again, the footpath is quite clearly marked. Follow it through the fields, and you can enjoy the view of Badwell Ash over to the right. It can get quite windy across the top, so you might want to remember a sweater.

When you reach the muck pile (be careful where you walk), at the road, turn right. You're going to be walking back towards the village. It's a single-lane road, so be wary of cars. Past the farm (and the sheep field), there is a footpath sign with a new bridge across the waterway on the right. Go over the bridge and follow the track straight (ish) across the field. You'll come out at a kissing gate behind Platinum Drive.

Follow the path straight to the road, and you'll be back on The Street. Make it a full circle by heading back to the shop, or congratulate yourself on an excellent walk by stopping in the pub.



Citizen's Advice

I've recently found myself living alone after the breakdown of my relationship. My council tax bill is due soon, and I'm worried I won't be able to afford to pay it on my own. I'm already struggling to cover the cost of my other bills. What can I do?

Here are some steps you can take to ease your financial worries:

1. Single Person Discount: Since you're now living alone, you can receive a 25% discount on your council tax. Make sure to notify your local council that you're the only adult in the household. Even if the person who left has been gone for some time, you're entitled to the discount from their departure date.

2. Disregarded People: If there are people living with you who are disregarded for council tax purposes (such as full-time students, under-18s, long-term hospital patients, etc.), it can reduce the number of people considered for council tax purposes, possibly leading to a discount. You can check online for a list of who counts as disregarded.

3. Second Adult Rebate: If there's another adult living with you who is on a low income or receiving certain benefits, you could be eligible for a 'second adult rebate,' which reduces your council tax.

4. Disability Reduction: If you or anyone you live with is disabled and your home has been adapted for that disability, you might be eligible to have your council tax band reduced. For example, a band C property that's been adapted for a disabled resident could be re-banded to a band B property, which would lower your bill.

5. Council Tax Reduction (CTR): If you have a low income, you can apply for a Council Tax Reduction, which may lower your bill. The council will ask about your income and circumstances to determine if you qualify. If you've reached State Pension age, different rules may apply.

6. Discretionary Reduction: In cases of severe financial hardship, your council can offer a discretionary reduction, which can reduce or even cancel your council tax. You will need to provide evidence of your situation. If you're denied this reduction, you can appeal to a valuation tribunal, which

could order the council to reduce or cancel your bill.

7. Seek Help: It's essential to communicate with your local council. If you're struggling, let them know as soon as possible. You can also reach out to Citizens Advice for assistance in navigating your options.

You can check out our website for more information on disregarded people, getting a second adult rebate and how to appeal a valuation on our website www.citizensadvice.org.uk/

Citizens Advice Mid Suffolk can provide in depth advice on this issue and much more, including debt, finances, employment, benefits and family/relationships.

You can contact them by phone on 01449 676060, visit in person at Milton House, 5 Milton Road South, Stowmarket IP14 1EZ or use the contact form at midsuffolkcab.org.uk/contact-us. Opening hours are Monday-Thursday 9.30am – 3.30pm and Friday 9.30am – 12.30pm.

Carpet Bowls

Clive Hawkins

I can only say that our fortunes have been mixed over the past couple of months. Alas, our home return match to Hundon in the Bury League Cup was unsuccessful, so we were knocked out.

Our match away to Tostock was more successful and a win. Home and away to Stanton, no joy; we lost both matches.

In February, four club members went to Cockfield to play in their annual Open Invitation Cup, and twenty teams competed. Unfortunately, we won two and lost two in the first round, which was not enough to advance, but it was a good day out nonetheless.

Back to the league, with evens at Thurston, a loss away at both Staningfield and Cockfield. The away match with Woolpit and the home

match with Staningfeild are still to be played. We are currently fifth in the league. Once these matches are played, the league season will be over.

Of course, we bowl every Tuesday evening in the village hall. As I have said, new members are always welcome to enjoy bowling for its social fun. Give us a look on Tuesday evenings at 7.30 pm or call me on 01359 259399.

Quick Quiz - Spring

1. What astronomical event marks the beginning of spring?
2. Which flower is often associated with the arrival of spring and is a popular symbol of the season?
3. What is the name of the festival of colours that marks the arrival of spring in India?
4. What do many animals do after winter ends, as the weather warms up?
5. What is the name for the day when there are equal hours of daylight and darkness?
6. Which month is traditionally associated with spring showers?
7. What insect becomes very active in the spring, helping to pollinate flowers?
8. Which holiday that involves eggs and bunnies occurs in the spring?
9. In Japan, what flower is celebrated during springtime festivals?
10. What happens to the length of the days during spring in the Northern Hemisphere?

Answers: 1. The vernal equinox. 2. Daffodil. 3. Holi. 4. Emerge from hibernation. 5. Equinox. 6. April. 7. Bees. 8. Easter. 9. Cherry blossoms. 10. They get longer.

Colour me in



A message from our County Councillor

Andy Mellen - andy.mellen@suffolk.gov.uk

Local government gets a shake-up.

Eric Pickles, a previous minister for local government, claimed that he kept a pearl-handled revolver in his office desk, ready to use on any civil servant foolish enough to suggest reform of local government. Well, dear old Eric is now in the House of Lords, and the new Labour government has disregarded the warning and has decided that the time has come to grasp the nettle and shake up our councils. In fact, they are trying to do two things at once: Devolution and local government reorganisation.

Firstly, devolution. You'll remember back in the 1990s, Tony Blair's government started the process of devolution by creating the Scottish Parliament and the Welsh Senedd. Later, we got mayors for places like London, Manchester and Bristol.

Now the process is continuing, and we are going to get a mayor for Norfolk and Suffolk (not a civic mayor with a gold chain and a tricorne hat – this will be a modern 'metro mayor', with powers and funding coming out from central government - think Andy Burnham). There's a consultation on this currently going on, which you can find at <https://consult.communities.gov.uk/lggc/norfolk>

and-suffolk-devolution-consultation/ and the expectation is that there will be elections for the mayor, and the formation of the Mayoral Combined County Authority, in May 2026. Please do complete the consultation if you can find time.

Alongside this, the government has set out its reorganisation plans; to combine the current two-tier system of county and district councils into a single tier of unitary councils (these already exist in other parts of the country). The idea is that a single council serving an area will provide a one-stop shop for all council services, avoiding confusion for residents and hopefully being more efficient.

Suffolk's councils have been asked to submit their initial proposals to the government in March, with full details following in September. This is where it gets complicated because two competing visions are emerging for the shape of future local government in Suffolk.

The County council has proposed one large unitary council for the whole of Suffolk. The alternative proposal, put forward by the districts and borough is for 2 or 3 smaller unitary councils.

Why does any of this matter to the residents of Badwell Ash? Councils provide a wide range of services that people depend on and also provide a safety net for those in need.

As councillors we represent the community and can raise your concerns and try to get something done. So, we need relatable structures covering sensible geographies that are large enough to deliver but small enough to connect. I believe this will be more difficult to do if we have a single 'mega-council' for the whole county. There will be a democratic deficit.

So that's why I am backing the idea of 2 or 3 smaller unitaries for Suffolk, and I hope that the minister will see the sense in this proposal. The timetable for this change is not entirely clear, but there's a lot of work to be done before the new councils can be stood up. We're expecting decisions late this year or early next, with elections to the new councils probably in 2027. There will be a period of change and transition. In the meantime, I will continue to represent you, so get in touch if there's an issue I can help you with.

In the garden...

Janet de Vries

We have survived the worst months of the gardening calendar - January and February - with thankfully no snow. So, now is the time to think about planting for Spring.



I did have a good showing of daffodils and newly planted tulips. I'm now planting primulas and polyanthus to give instant colour in the front of the borders whilst sowing hardy annuals such as low-in-the-mist and pot marigolds with native wildflowers into gaps in the borders.

Make sure you continue deadheading spring bulbs and bedding so they don't waste energy setting seed.

Watch out for slugs and snails nibbling on new shoots of hostas, delphiniums and lupins. Spray new leaves on disease-prone roses with a fungicide to control mildew, rust and black spot.

Now is the time to prune your hydrangeas, cutting back the old stems to a healthy shoot lower down. Sow sunflowers in a sunny open site, then water regularly to protect the seedlings from slugs and snails.

Once in May, plant up hanging baskets, but keep them in a porch or greenhouse for a few weeks to make sure they are established. Apply liquid feed to daffodils, tulips and other spring bulbs to encourage a good display for next year.

Remove faded spring bedding, such as wallflowers and forget-me-nots, and add them to your compost bin. After the last frost, plant summer bedding and tender annuals, including sunflowers and cosmos.



Photo by balesstudio and Kwang Mathurosemontri on Unsplash

Simnel Cake recipe

A traditional Easter cake. This is a Simnel cake with symbolism and connection to the 11 apostles. It's been eaten since medieval times and was traditionally made for the fourth Sunday in Lent.

This recipe is for a modern version - a fruitcake with 11 marzipan balls (one for each apostle of Jesus, excluding Judas Iscariot), but some historical references suggest alternatives, such as boiled fruit dough in pastry cases, similar to a Christmas pudding.

Ingredients:

- 250g mixed dried fruit - candied mixed peel, currants, raisins, and sultanas.
- 1 orange - zested and juiced
- 500g marzipan
- 250g softened butter
- 200g light brown soft sugar
- 4 medium eggs
- 175g plain flour
- 100g ground almonds
- 1 tsp baking powder
- 1 lemon - zested
- 2 tsp mixed spice
- 1 tsp vanilla extract
- 100g chopped glacé cherries
- 3 tbsp apricot jam or marmalade

Plus one more egg, beaten, to use as a glaze.

Method:

1. Heat the oven to 150C (130C fan) or gas mark 2.
2. Add the dried fruit, orange juice and zest, and 2 tbsp of water to a pan over a gentle heat. Stir occasionally until the liquid is absorbed.
3. Take off the heat and leave to cool.
4. Make your marzipan (or take it out of the packet) and cut it into 3rds.
5. Take 1/3rd and roll into a 20cm circle. Leave the rest of the marzipan for later.
6. Butter and line a 20cm cake tin
7. Cream the butter and sugar
8. Add the four eggs, flour, almonds, baking powder, lemon zest, mixed spice and vanilla and combine.
9. Mix in the soaked fruit and fold in the cherries.

(and level it). Add the marzipan circle, and then put the other half of the cake mix on top, making sure that's level, too.

10. Put half of the mixture into the tin

11. Bake for 2 hours or until cooked.
12. Brush the top of the cake with the apricot jam or marmalade.
13. Roll out half of the remaining marzipan into a circle big enough to cover the top of the cake. Then make 11 balls out of the rest.
14. Brush the marzipan and apostles with the last (beaten) egg.
15. Put under a hot grill for two minutes - don't let it burn.
16. Eat.

EASTER EGG HUNT

BADWELL ASH

From Badwell Ash Church to Langham
Church

Friday 18th of April
10am Start

£4 per child, every child gets an Easter egg,
booking only.

Refreshments and Raffle at Langham.

For any more information, contact

Julia: 07542 778558

Stephen: 07714 273669



QUIZ NIGHT

WITH FISH & CHIPS
[OPTIONAL]

FRIDAY 25TH APRIL

Doors open 7pm | Quiz Starts 7:30pm

**BADWELL ASH VILLAGE
HALL, IP31 3DG**

Quiz Ticket = £4 pp - Teams of 6 ppl max

Quiz Ticket + Fish & Chips = £15 pp

Quiz Ticket + Sausage & Chips = £10 pp

PLEASE BRING YOUR OWN DRINKS

Register your team & order food by 21st April

Contact: Chloe 07808 715266 or

Email: badwellashvh@btinternet.com

Registered Charity No. 279997 | A Village Hall Community Event

SUFFOLK LIBRARIES

Mobile Library

Location: Lay-by, The Street, Badwell Ash

Stop: 5F

Route: Bury St Edmunds mobile library route 5

4th March, 2025

1st April, 2025

29th April, 2025

27th May, 2025

24th June, 2025

22nd July, 2025

19th August, 2025

16th September, 2025

14th October, 2025

11th November, 2025

9th December, 2025



The 4Cs

Community, Coffee, Cake and Chat
(Bring your own craft, too, if you want)

Friday 21 February 2025

No meeting in March

Friday 11 April 2025

From 10:00 til noon
At Badwell Ash Village Hall

There is a small charge for refreshments and we may hold a mini raffle and a possibly a mini Bingo session to raise additional funds for charities.

Thank you to all our supporters. Since The 4C's started in April 2023 we have raised over £1700 which we have donated to Macmillan, Dementia Care UK, Roy Castle Lung Cancer Foundation Trust and, early this year, to West Suffolk Hospital Special Baby Care Unit.

Sue and June

At the Village Hall.

Tuesday

Silver Ash | 2-3.30pm | Small hall, once a fortnight.

Carpet Bowls | 7.30-9.30pm | Large hall.

Wednesday

Dog training classes | 6.30-9.00pm | Large hall.

Thursday

Dog training classes | 6.30-9.00pm | Large hall.

Rainbow's | 4.15 - 5.45pm | Small hall

Dates for
your diary



Easter Egg hunt - 18th April, 10am - St Mary's Church

Quiz night - 25th April 7pm doors open / 7.30pm start - Village Hall

Plant sale - 17th May - St Mary's Church

Art exhibition - 21-22nd June - St Mary's Church

Launch Party to show work done at the Village Hall - Saturday

12th July 2025 2pm onwards - Village Hall

Car show in aid of Cancer research - Sunday 17th August -

Badwell Ash Hall

History day - September (date and time TBC) - St Mary's Church

Jumble sale - October (date and time TBC) - St Mary's Church

Christmas Fair and lights switch on - Sat 13th December - St

Mary's Church

YOU NEED IT?

CLARKES HAVE IT!

The Street, Walsham-le-Willows, Bury St Edmunds, Suffolk, IP313BA



- > **TIMBER SUPPLIES**
- > **BUILDING MATERIALS**
- > **GARDENING & LANDSCAPING**
- > **BESPOKE JOINERY SERVICES**
- > **TOOLS & HARDWARE**
- > **AGGREGATES**
- > **GATES & FENCING**



CLARKES
OF WALSHAM LIMITED

01359 259 259
www.clarkesofwalsham.co.uk